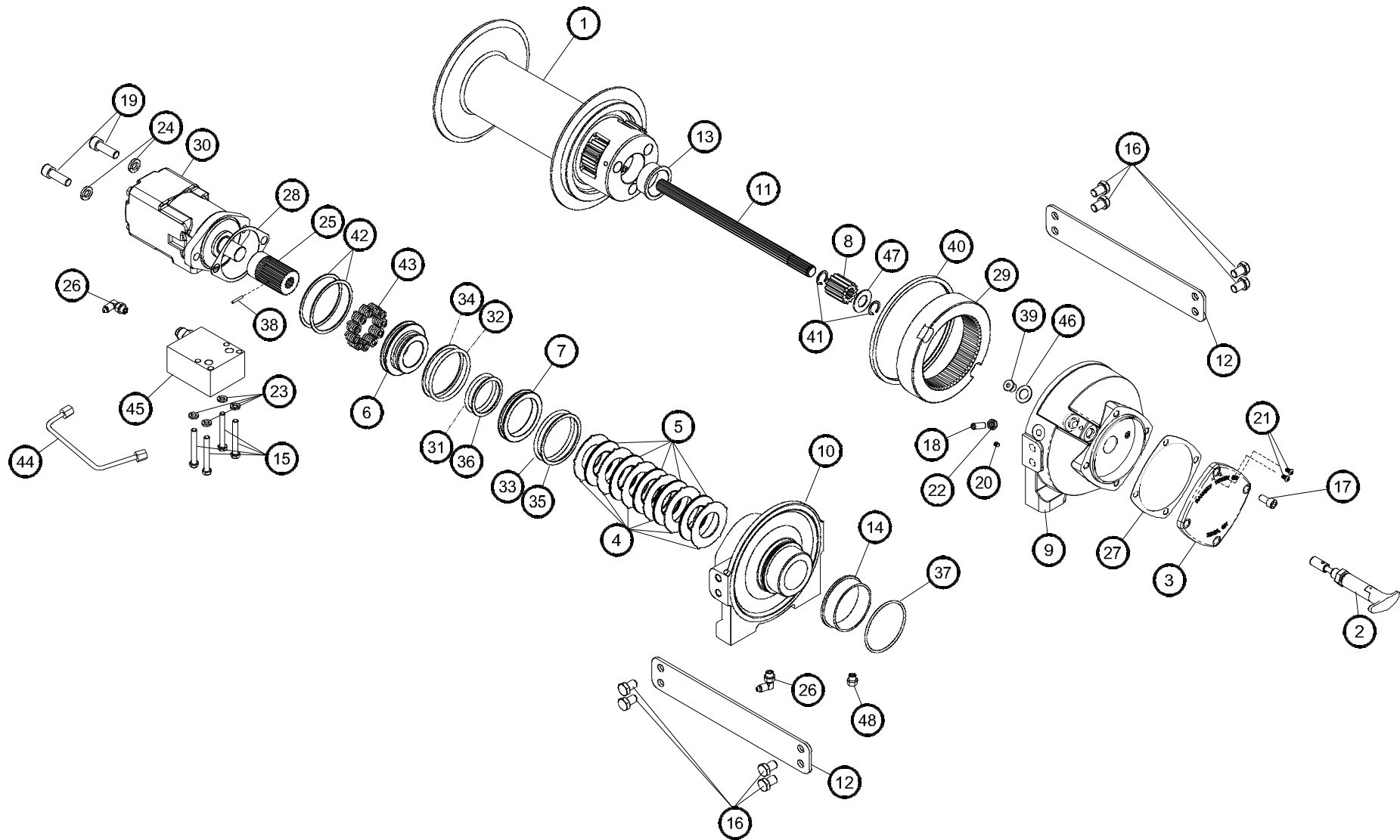


Ramsey HD-P 10000 manueller Freilauf

Ramsey HD-P 10000 manual clutch



Ramsey HD-P 10000 manueller Freilauf

Ramsey HD-P 10000 manual clutch



Item No.	Quantity	Part No.	Description	Item No.	Quantity	Part No.	Description
1	1	234207	DRUM ASSY STD	24	2	418218	LOCKWASHER-1/2 ID MED SECT, ZINC
	1	234208	DRUM ASSY "Y"	25	1	431020	COUPLING-MOTOR
2	1	276048	SHIFTER ASSY	26	2	432018	FITTING
3	1	328164	COVER-GEAR HOUSING	27	1	442212	GASKET-GEAR HOUSING COVER
4	6	330011	STATOR-BRAKE	28	1	442223	GASKET-MOTOR FLANGE
5	5	330012	DISC-BRAKE	29	1	444084	GEAR-RING
6	1	330013	PISTON-BRAKE	30	1	458079	MOTOR-HYD.
7	1	330014	PISTON-BACKUP BRAKE	31	1	462067	O-RING PISTON-SM.
8	1	334174	GEAR-OUTPUT, SUN	32	1	462068	O-RING PISTON-LG.
9	1	338327	END BEARING-GEAR HOUSING	33	1	462069	O-RING BACKUP PISTON
10	1	338358	END BEARING-MOTOR	34	1	462070	RING-BACKUP PISTON-LG
11	1	357177	SHAFT-INPUT STD DRUM	35	1	462071	RING-BACKUP BACKUP PISTON
	1	357176	SHAFT-INPUT "Y" DRUM	36	1	462072	RING-BACKUP PISTON-SM
12	2	395427	PLATE-TIE STD DRUM	37	1	462073	O-RING
	2	395426	PLATE-TIE "Y" DRUM	38	1	470033	SPIROL PIN
13	1	412085	BUSHING-DRUM	39	1	472052	PLUG
14	1	412109	BUSHING-DRUM, MOTOR END	40	1	486080	SEAL
15	4	414159	CAPSCREW-5/16-18UNC X 2 1/2", HEX HEAD, ZINC, GR5	41	2	490003	SNAP RING
16	8	414581	CAPSCREW-1/2-13NC X 3/4", HEX HEAD, ZINC, GR5	42	2	490049	RING-INTERNAL RETAINING
17	4	414901	CAPSCREW-3/8-16NC X 3/4", HEX SOCKET HEAD	43	11	494124	SPRING-BRAKE
18	1	414926	SETSCREW-3/8-16NC X 1", SOCKET HEAD, NYLON	44	1	509132	TUBE-BRAKE RELEASE (PORTS DOWN)
19	2	414952	CAPSCREW-1/2-13NC X 1 1/2", SOCKET HEAD, ZINC		1	509131	TUBE-BRAKE RELEASE (PORTS UP)
20	1	416016	SETSCREW-1/4-20NC X 1/4", HEX SOCKET HEAD CUP	45	1	516041	VALVE-MOTOR CONTROL (A ROTATION)
21	2	416239	SCREW-#10-24NC X 3/8", HEX SOCKET BUTTON HEAD		1	516042	VALVE-MOTOR CONTROL (B ROTATION)
22	1	418036	NUT-3/8-16 NC, HEX JAM, ZINC	46	1	518037	THRUST WASHER
23	4	418163	LOCKWASHER-5/16 MED SECT, ZINC	47	1	518047	THRUST WASHER
				48	1	456038	BREATHER VENT

Bitte nehmen Sie bei der Bestellung von Ersatzteilen Bezug auf die genannte Ramsey-Artikelnummer.

When ordering a spare part, please refer to these Ramsey code numbers.